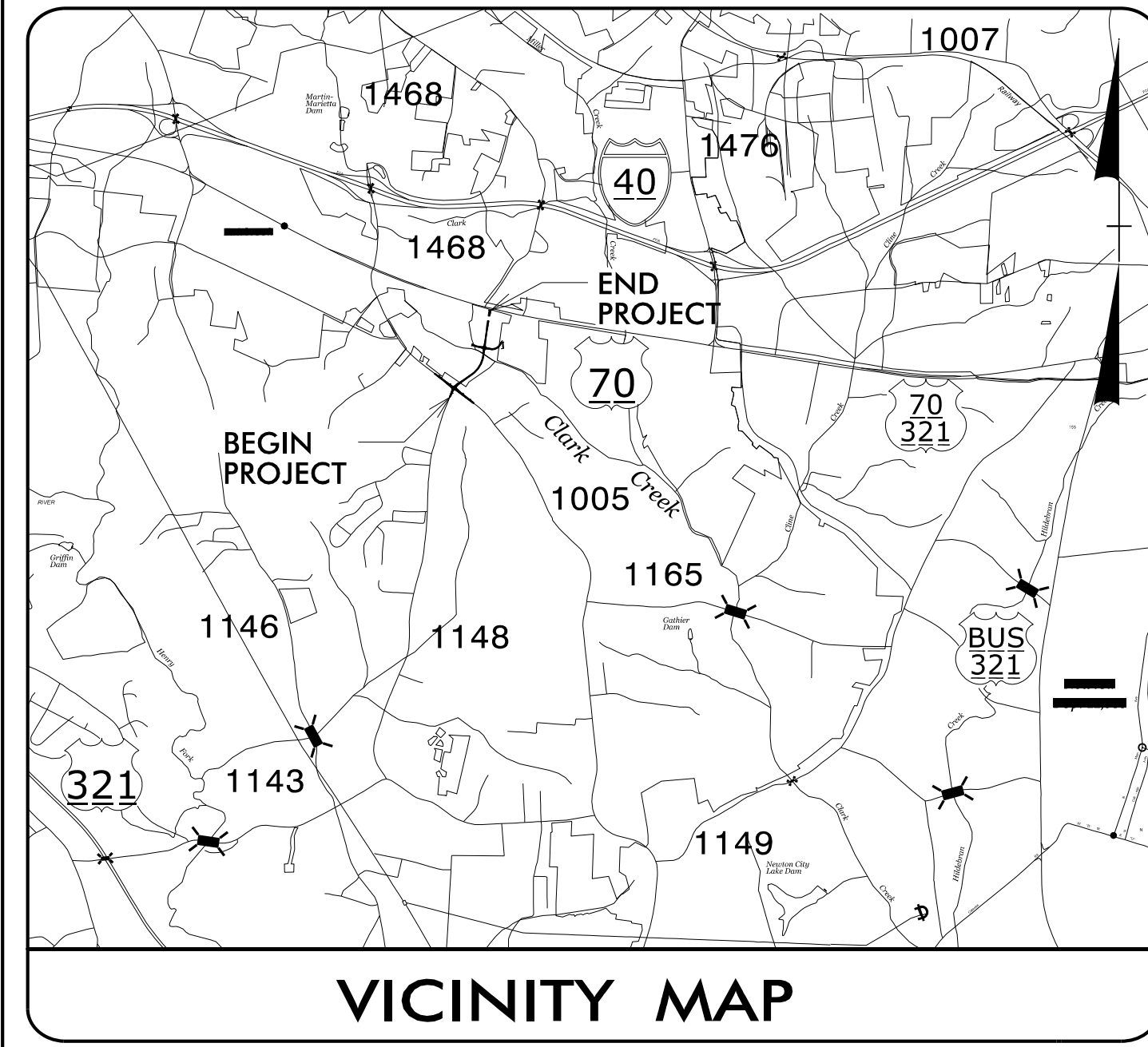


09_08/99

11-APR-2017 09:46 C:\Users\NCO\Tuser\N\Desktop\U5510\Utilities\Engineering\UBO\Proj\290_001_U5510_ut_tsh_U001_psh.dgn \$\$\$USERNAME\$\$\$

TIP PROJECT: U-5510



STATE OF NORTH CAROLINA
DIVISION OF HIGHWAYS

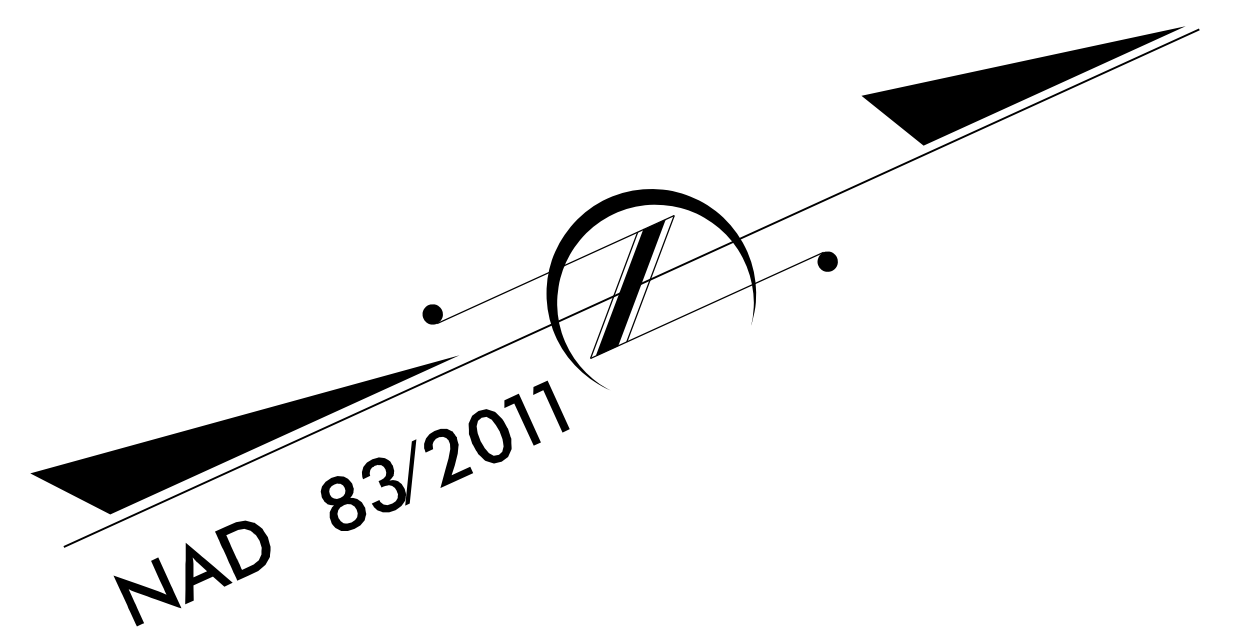
**UTILITIES BY OTHERS PLANS
CATAWBA COUNTY**

**LOCATION: SR 1468 (SWEETWATER RD) EXTENSION FROM
US 70 TO SR 1005 (STARTOWN RD)**

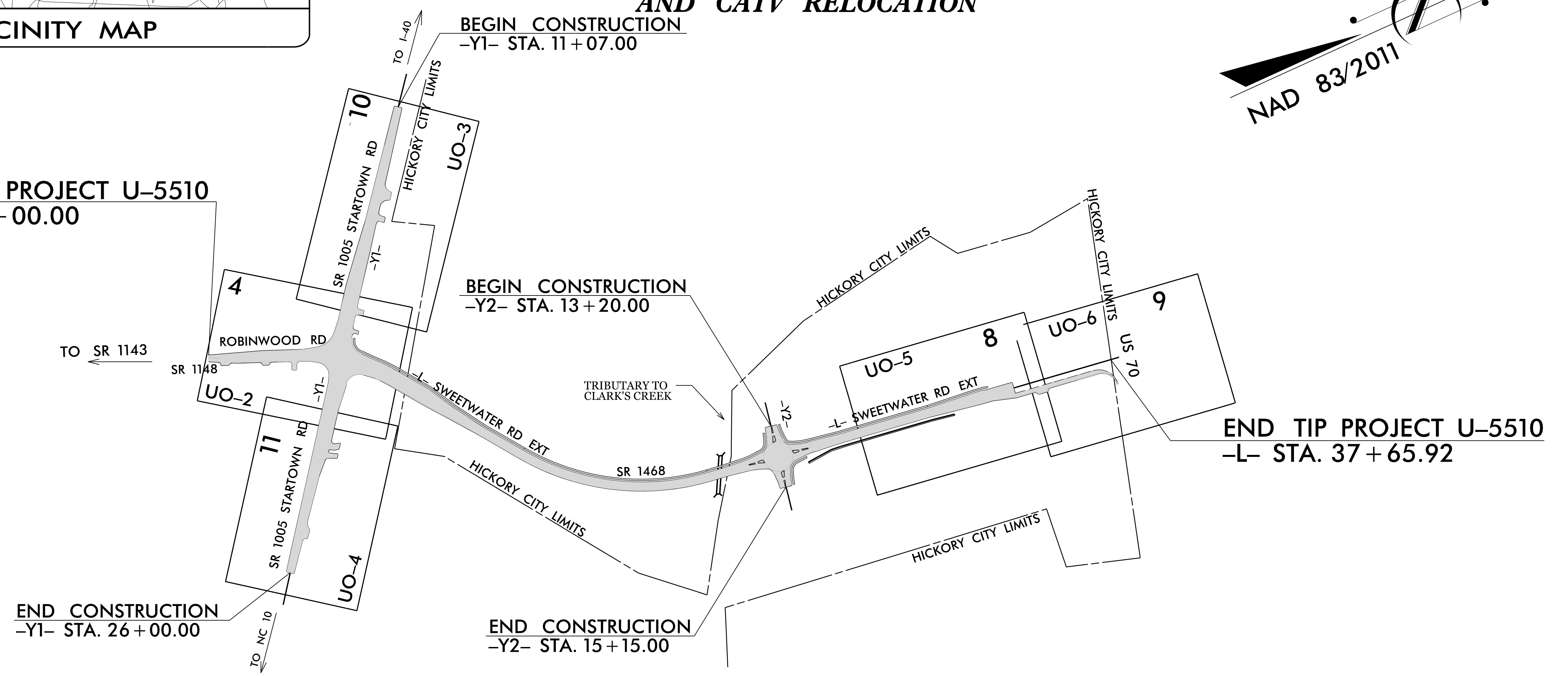
**TYPE OF WORK: POWER DISTRIBUTION, TELEPHONE,
AND CATV RELOCATION**

T.I.P. NO.	SHEET NO.
U-5510	UO-1

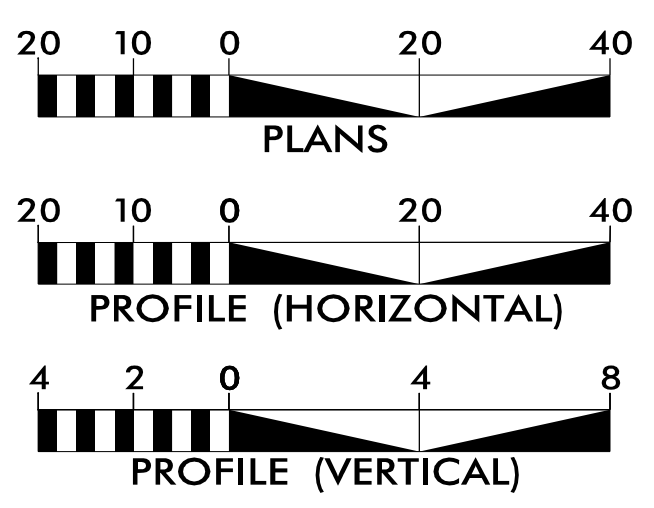
NOTE:
ALL UTILITY WORK SHOWN ON THIS SHEET IS DONE BY OTHERS.
NO PAYMENT WILL BE MADE TO THE CONTRACTOR FOR UTILITY WORK SHOWN ON THIS SHEET.



BEGIN TIP PROJECT U-5510
-L- STA. 8 + 00.00



GRAPHIC SCALES



INDEX OF SHEETS

SHEET NO.:	DESCRIPTION:
UO-1	TITLE SHEET
UO-2 THRU UO-6	UBO PLAN SHEETS

UTILITY OWNERS WITH CONFLICTS

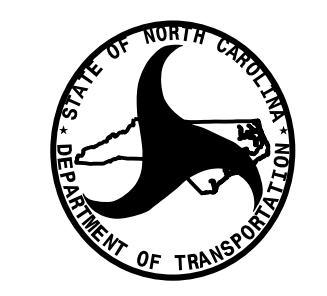
- (A) DUKE ENERGY - POWER DISTRIBUTION
- (B) CENTURY LINK - COMMUNICATIONS
- (C) CHARTER COMMUNICATIONS - CATV

PREPARED IN THE OFFICE OF:

TELICS

849 SOUTH LAUREL ST
LINCOLNTON, NC 28092
PHONE (704) 732-3241

STEVE MODE	UTILITY PROJECT MANAGER
DANNY LITTLE	PROJECT UTILITY COORDINATOR

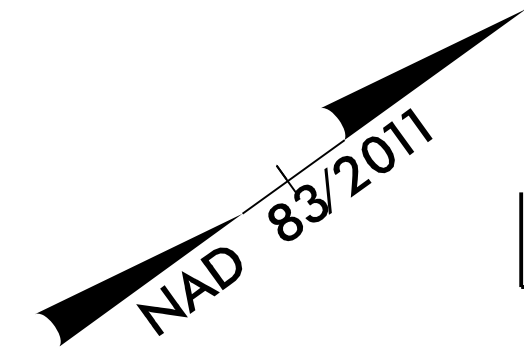
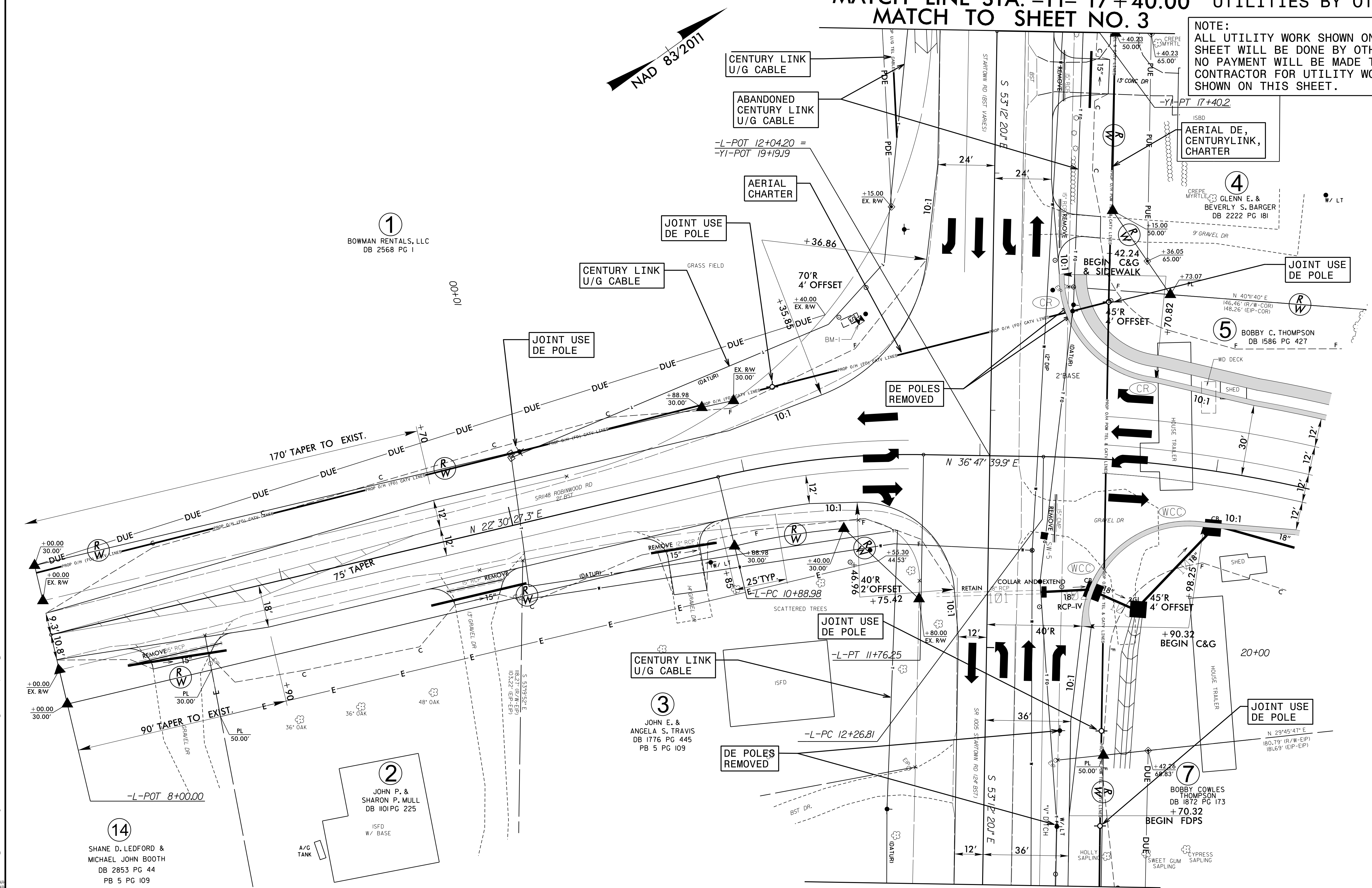


**DIVISION OF HIGHWAYS
UTILITIES UNIT**
1555 MAIL SERVICES CENTER
RALEIGH, NC 27699-1555
PHONE (919) 707-6690
FAX (919) 250-4151

CARL BARCLAY, PE	UTILITIES REGIONAL ENGINEER
JAMES SWINSON	UTILITIES ENGINEER
AMY DUPREE	UTILITIES AREA COORDINATOR
CHAD DREWERY	UTILITIES COORDINATOR

MATCH LINE STA. -Y1- 17+ 40.00 UTILITIES BY OTHERS
MATCH TO SHEET NO. 3

NOTE:
ALL UTILITY WORK SHOWN ON THIS SHEET WILL BE DONE BY OTHERS. NO PAYMENT WILL BE MADE TO THE CONTRACTOR FOR UTILITY WORK SHOWN ON THIS SHEET.

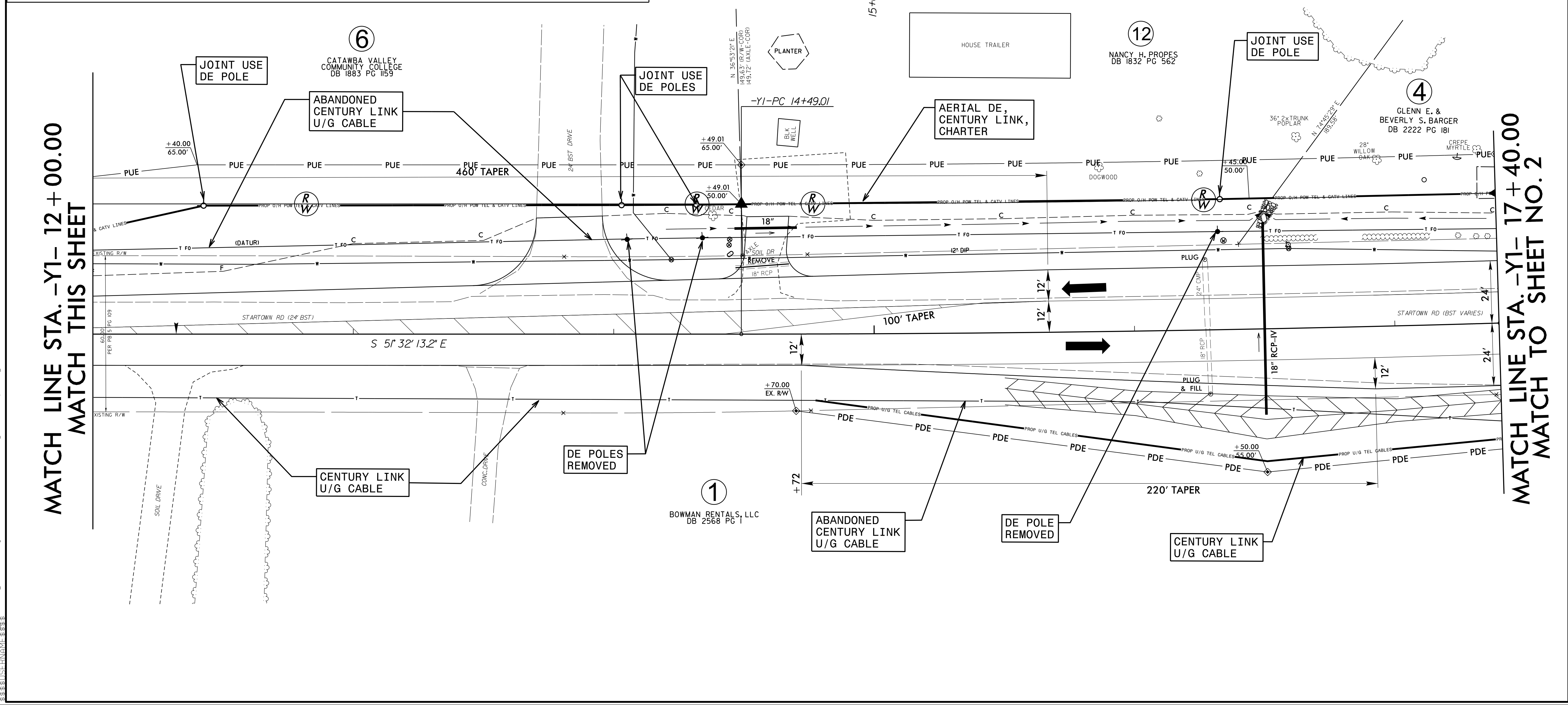
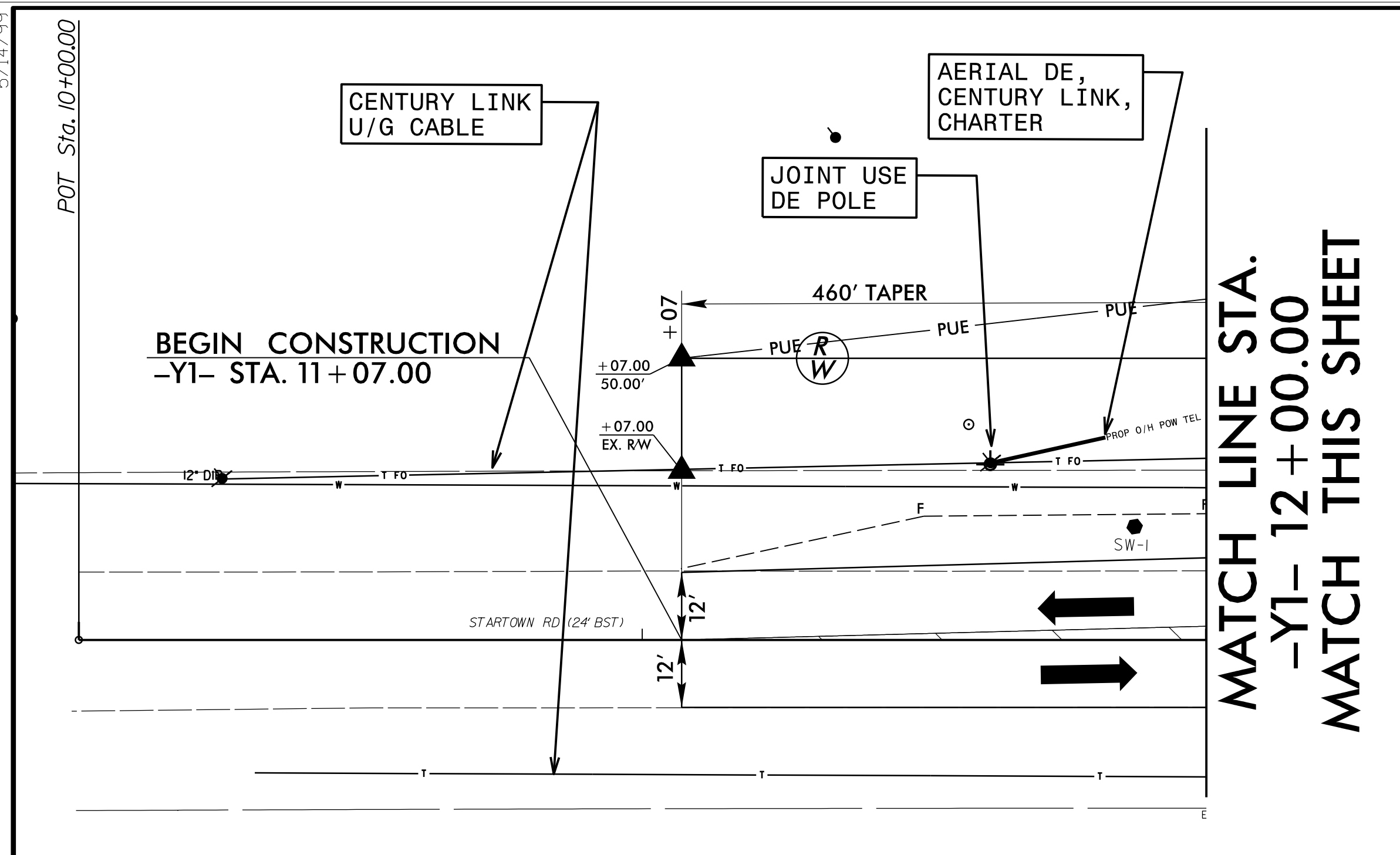
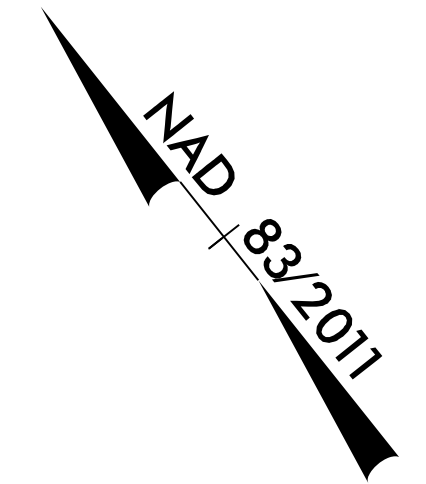


MATCH LINE STA. -Y1- 21+ 00.00
MATCH TO SHEET NO. 4

17 MAR 2017 09:56 c:\p\5510\U5510\U5510-ut-rdy4-U002-pshd.dgn
 5/14/99

UTILITIES BY OTHERS

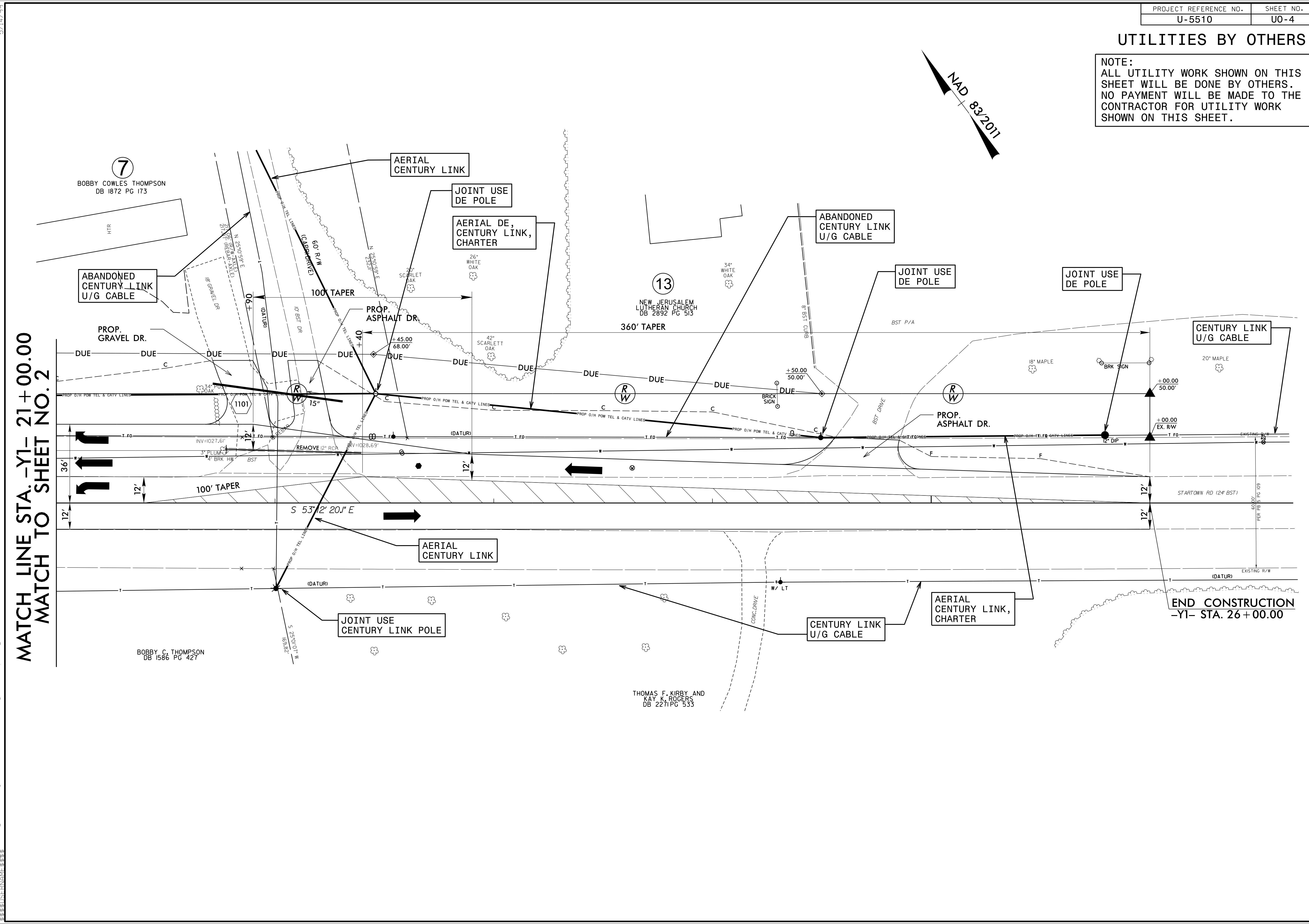
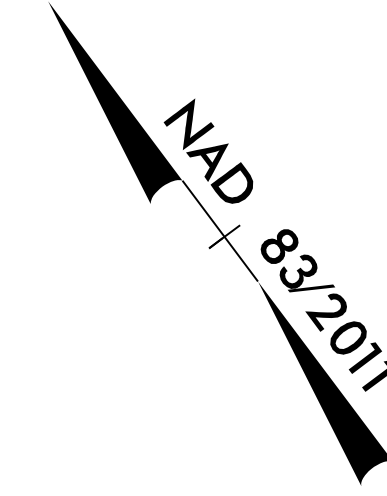
NOTE:
ALL UTILITY WORK SHOWN ON THIS SHEET WILL BE DONE BY OTHERS. NO PAYMENT WILL BE MADE TO THE CONTRACTOR FOR UTILITY WORK SHOWN ON THIS SHEET.



5/14/99 POT Sta. 10+00.00
 17-MAR-2017 12:16
 pp\U5510\N\U5510_005_U5510_ut_r.dwg\U003_psh.dgn

UTILITIES BY OTHERS

NOTE:
ALL UTILITY WORK SHOWN ON THIS SHEET WILL BE DONE BY OTHERS. NO PAYMENT WILL BE MADE TO THE CONTRACTOR FOR UTILITY WORK SHOWN ON THIS SHEET.



MATCH LINE STA. -Y1- 21+00.00
MATCH TO SHEET NO. 2

END CONSTRUCTION
-Y1- STA. 26+00.00

7
 BOBBY COWLES THOMPSON
 DB 1872 PG 173

13
 NEW JERUSALEM
 LUTHERAN CHURCH
 DB 2892 PG 513

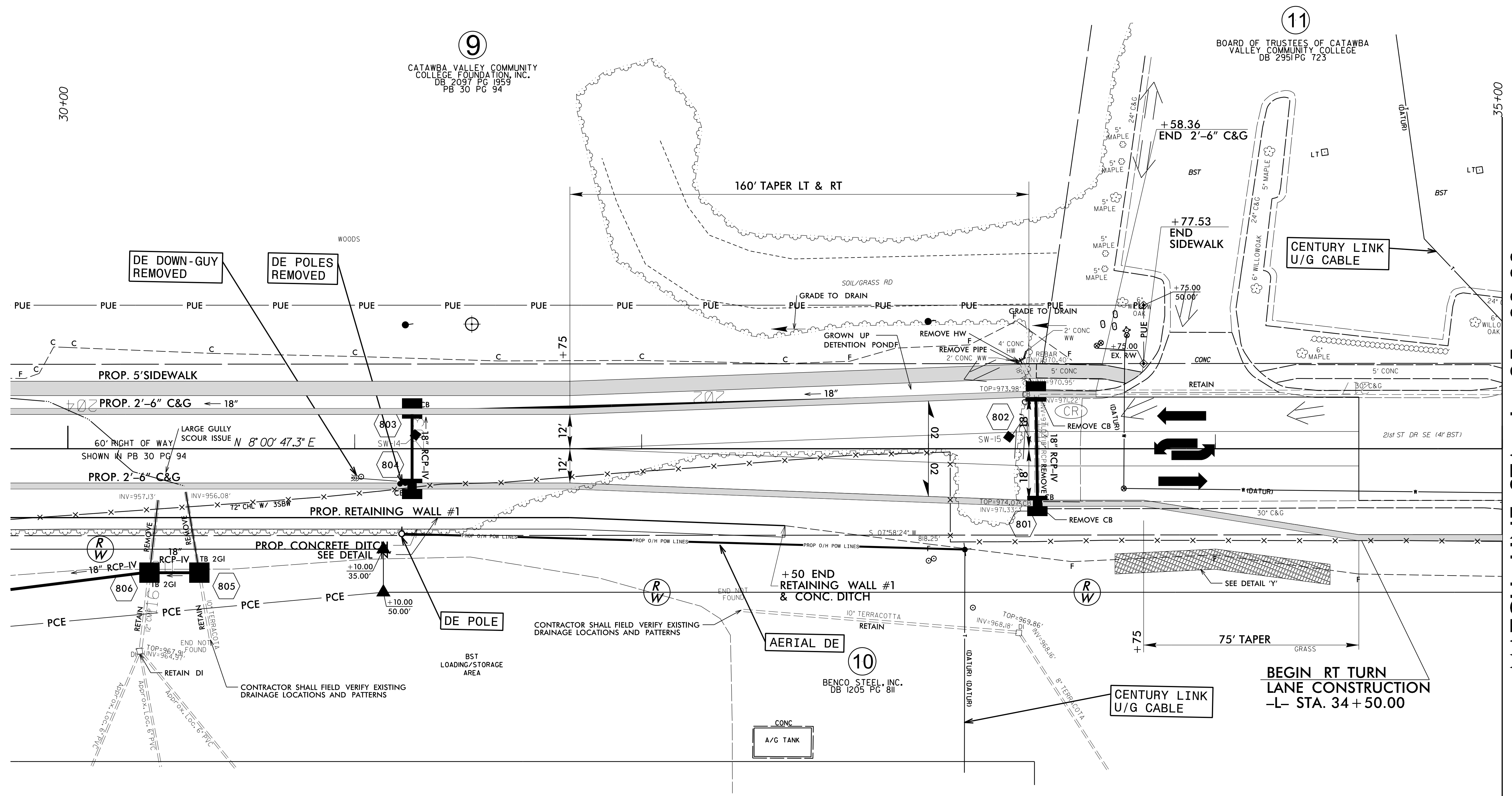
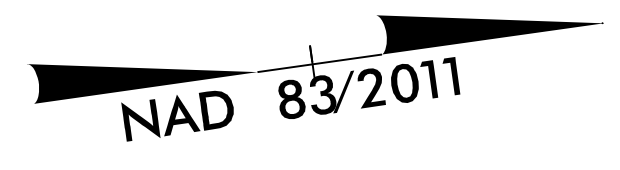
BOBBY C. THOMPSON
 DB 1586 PG 427

THOMAS F. KIRBY AND
 KAY K. ROGERS
 DB 2271 PG 533

5/14/99
 17_MAF-2017_10-01
 C:\Users\j...p\U5510\...eeer-mg\UBO\Proj\290_007_U5510_ut_r.dwg
 U5510_007_U5510_004_psh.dgn

UTILITIES BY OTHERS

NOTE:
ALL UTILITY WORK SHOWN ON THIS SHEET WILL BE DONE BY OTHERS. NO PAYMENT WILL BE MADE TO THE CONTRACTOR FOR UTILITY WORK SHOWN ON THIS SHEET.

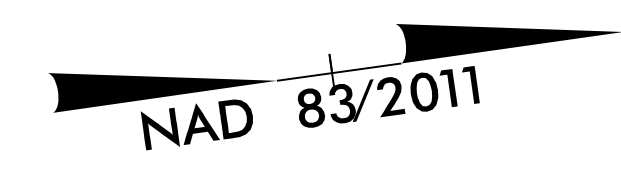


MATCH LINE STA. -L- 35+00.00
MATCH TO SHEET NO. 6

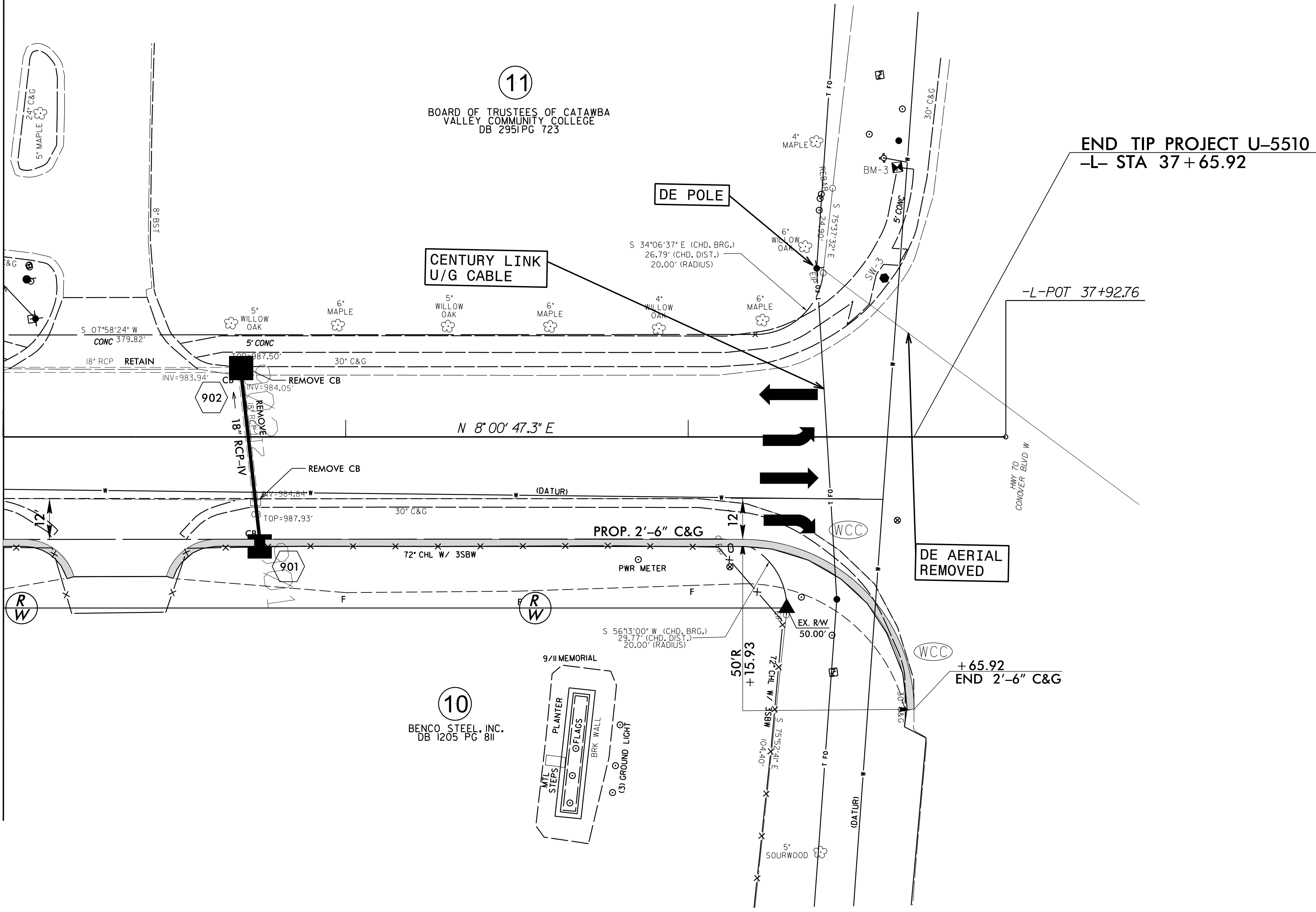
5/14/99
11 APR 2017 10:03
p:\U5510\01\Drawings\Engineering\UB01\Proj\A290_U5510_ut_rdy8_U005_psh.dgn

UTILITIES BY OTHERS

NOTE:
 ALL UTILITY WORK SHOWN ON THIS SHEET WILL BE DONE BY OTHERS. NO PAYMENT WILL BE MADE TO THE CONTRACTOR FOR UTILITY WORK SHOWN ON THIS SHEET.



MATCH LINE STA. -L- 35 + 00.00
 MATCH TO SHEET NO. 5



END TIP PROJECT U-5510
 -L- STA 37+65.92

-L-POT 37+92.76

+65.92
 END 2'-6" C&G

11

BOARD OF TRUSTEES OF CATAWBA VALLEY COMMUNITY COLLEGE
 DB 2951 PG 723

10

BENCO STEEL, INC.
 DB 1205 PG 811

5/14/99

I:\FR-2017-19-04
 op\U5510\11\Engineering\UB01\Proj\290_011_U5510_ut_rdy_9_U006_psh.dgn